

HILLTOP GAZETTE

A man with a slight smile, wearing a light-colored polo shirt and khaki pants, stands in a workshop. He is leaning on a wooden workbench. The background is filled with various tools, wood, and equipment, suggesting a restoration or construction project. A white mug with the word 'Heritage' is visible on the workbench.

An Agricultural Addition

Restoring the Bond Factory Migrant Cabin



Interpreter Tim Brumm showing guests the Officer's Quarters during *A Fort Howard Christmas* Dec '21

CONTENTS

A soldier at rest during *A Fort Howard Christmas* in Dec '21



- 4
From the Executive Director
Michael Telzrow
- 5
Play the Fife and Beat the Drum
Development
- 6
Calendar of Summer Events
- 8
An Agricultural Addition
Restoring the Bond Factory Migrant Cabin
- 12
Corsets, Trousers and Moccasins, Oh my!
Education and Volunteering
- 14
Spring is Here
New Birthday Party Package
- 15
The Voyager Sculpture
A new (past) face for Heritage Hill



HERITAGE·HILL
STATE HISTORICAL PARK

The mission of Heritage Hill State Historical Park is to enrich the lives of others by sharing Northeast Wisconsin's diverse cultural and historic ties that bind our communities together.

WWW.HERITAGEHILLGB.ORG

HERE'S TO THE FUTURE OF THE PAST

The mission of the Heritage Hill State Historical Park is to enrich the lives of others by sharing Northeast Wisconsin's diverse cultural and historic ties that bind our communities together.



Michael Telzrow
Executive Director

The drive to preserve things from the past satisfies an inherent human need to pass along shared memories to successive generations. This attachment goes beyond mere antiquarianism, or the fascination with objects of a bygone era. **The past makes us who we are today.**

Learning about our historical inheritance provides a sense of place and attachment. It bolsters civic pride and fosters communal unity. It is how we order our lives and place ourselves within the context of our world. It has been argued by many that the loss of those places and things that form our collective and personal past may actually threaten the underpinnings of a free society like ours.

Indeed, our civic health depends upon the “mystic chords of memory” of which Lincoln spoke that bind this nation together, because a nation is much more than a mere line on a map. It is an expression of shared principles, culture and institutions which together create a common vision of national unity and identity.

Heritage Hill State Historical Park was founded by individuals that understood the notion of citizenship and the value our historical inheritance provides in developing good citizens and shaping future generations. Moving forward, the staff and leadership of Heritage Hill looks to keep that dream alive by revitalizing our historical programs and broadening our perspectives to include the full range of local history, while providing the special events that can only be found here.

Of course, none of this can be done without the support of our stakeholders – members like yourself who value the rich history of our region. **Remember that your membership plays a major role in strengthening the cultural and civic health of Northeast Wisconsin.** Thank you for your continued support!

Michael Telzrow
Executive Director



The garrison flag flying high during the first day of spring field trips, May '22



Madeleine Buccholz
Director of Development

PLAY THE FIFE AND BEAT THE DRUM

Hello! My name is Madeleine, and I joined Heritage Hill as Director of Development in February.

As a Green Bay native, I am excited to be able to work for an organization that holds such a special place in the hearts of so many.

We are excited to welcome back our members and visitors to Heritage Hill State Historical Park for its forty-fifth season. After closing our doors for two years, we are looking forward to once again sharing the cultural and historic ties that bind us together. Our longtime supporters and visitors will notice many new developments here. A new logo and mission statement more faithfully reflect the vision of our founders. New leadership and staff are working closely with longtime interpreters and volunteers to revitalize our interpretive approach, and to once again share the stories that have shaped our region's history.

"All of these developments point to a bright future, but we cannot do it without your help. There are a number of areas in which your support may contribute towards our direct success."

First, our historic clothing collection is in need of attention. Many years of hard use and attrition have depleted the clothing that our dedicated interpreters use on a daily basis. Period-correct accuracy is imperative. Anachronistic elements must be replaced with historically-correct items. If possible, we will repair items but all of these options require additional funding.

Second, as many of you have heard, we recently acquired an agricultural migrant cabin associated with the Bond Pickle Factory in Oconto County. This will allow us to tell the little-known story of migrant workers, most of whom were American citizens, increasing the park's ability to tell the stories of underrepresented groups who have made strong cultural and historical contributions to the development of this country.

Finally, we are working to establish a Fife and Drum Corps! During the active days of Fort Howard, military musicians provided a means of communication throughout the day by playing signals meant to convey routine military evolutions. Military music was an integral part of daily operations of Fort Howard and ensured that the frontier fort maintained discipline and order. Not only will this add a unique level of historical accuracy to our Fort Howard area, it will provide an enjoyable aspect for our guests, who will be able to enjoy the sights and sounds of the corps not only on regular days, but for special events. We hope that the Fife and Drum Corps will become a tradition for years to come, but we need your help! Historically accurate military snare drums of the period are needed, along with musician's uniforms that differed in color from the regulation blue.

We want to thank you all for your continued support in our efforts. After 45 plus years of support from the community and state, we truly wouldn't be here without you, and I would encourage you to reach out to me with any questions or concerns. We are thrilled about the direction of Heritage Hill State Historical Park, and are looking forward to having you all along with us on this ride. Forward!

Heritage Hill's own period drum



Fife and drum music from a Fort Howard manual

Nº 8. The Troop.



S U M M E R

Music ON THE GREEN

Every other Monday night in the summer we will feature musical acts and food trucks from around the Midwest. They will play on the Victorian Bandstand in the "Growing Community" area of Heritage Hill, surrounded by town buildings from the late 19th and early 20th century of Northeastern Wisconsin.

PRICING

Member	\$5
Adult	\$7
Child	\$2
Tents and picnic table rental	\$45

TO PURCHASE ADMISSION OR RENT A TENT,
PLEASE VISIT WWW.HERITAGEHILLGB.ORG

LINE UP

June 13 - Copper Box and Carriibbean Cruiser

June 27 - The MilBillies and Oley's Pepperoni Cannoli

July 11 - Reverend Raven & the Chain-Smokin' Altar Boys and Mai's Fresh & Delicious Eggrolls

July 25 - Joey J. Saye Duo and Blue Suede Foods

August 8 - The Dirty Martinis and Captain Quesadilla

August 22 - Big Mouth & the Power Tool Horns and Gourmet Corn

Interested in sponsorship? Contact Madeleine Buchholz, Director of Development, at madeleine@heritagehillgb.org

DAILY HOURS AND ADMISSION

Monday	Closed
Tuesday	9 am - 4:30 pm
Wednesday	9 am - 4:30 pm
Thursday	9 am - 4:30 pm
Friday	9 am - 4:30 pm
Saturday	9 am - 4:30 pm
Sunday	Noon - 4:00 pm

.....

Members	Free
Adults	\$12
Youth (4 - 17)	\$8
Children under 5	Free
Seniors (65+)	\$10
Active military personnel	Free



E V E N T S

HYSTERICAL HISTORICAL SERIES

In partnership with Let Me Be Frank Productions!



\$25 / person: general admission

THE WAKE OF JOHNNY BLOOD

Sun, June 12 | 1 - 3 pm

Johnny Blood was a polarizing figure of Green Bay Packer lore. We take you back on a train ride to Los Angeles in 1929, when one of his gal-pals parked on the railroad track so Blood wouldn't miss the train. Is Johnny dead, or just dead drunk? Curly does a quickie funeral to get back on the track. Music from the 1950s.

THE DEATH OF AL/Alice CAPONE

Sun, July 10 | 1 - 3 pm

It's a comedy/mystery/musical set in Green Bay in the 1930s. Al Capone takes a little getaway on the Chicago Northwestern railroad to the Northland Hotel. Unbeknownst to Al, three other gangsters are on the same train; John Dillinger, Baby Face Nelson, the insignificant character, and Elliot Ness. Is it a who-dun-it...could it be you?

THE LIFE OF EBENEZER CHILDS

Sun, August | 1 - 3 pm

Ebenezer Childs was one of the forefathers of La Baye, or Green Bay. He loved to tell everyone of his many accomplishments even if they weren't true, but most were! All original songs from Frank Hermans.

1812 MUSTER & DRILL

Sat & Sun, July 10 - 11 | 9 am - 4:30 pm

Step back in time to Fort Howard as it stood in the mid 1800's. Learn about soldier and civilian life, hear and witness musket demonstrations, and generally immerse yourself in Fort life. Each day will begin with a raising of the colors and end with a retiring of the colors.

Free for Members! (Daily admission applies)

INDEPENDENCE DAY CELEBRATION

Mon, July 4 | TBD

Join Heritage Hill for a celebration of all things patriotic. Did you know that Tank Cottage was built in 1776? Learn about how America's independence was celebrated in every century. Special themed games and crafts for kids will be available around the park.

Free for Members! (Daily admission applies)

HOPS AT THE HILL

Thurs, August 4 | 5 - 9 pm

Our largest park fundraising event in partnership with Dean Distributing and Parker John's Barbeque. Not just hops this year! Sample local spirits and wines, and, of course, craft brews in the Fort Howard area of Heritage Hill. There will also be a silent auction as well as a 50/50 raffle.

\$45 / Pre-sale

\$50 / Day-of

To purchase tickets or learn more about any of our events, please visit www.heritagehillgb.org

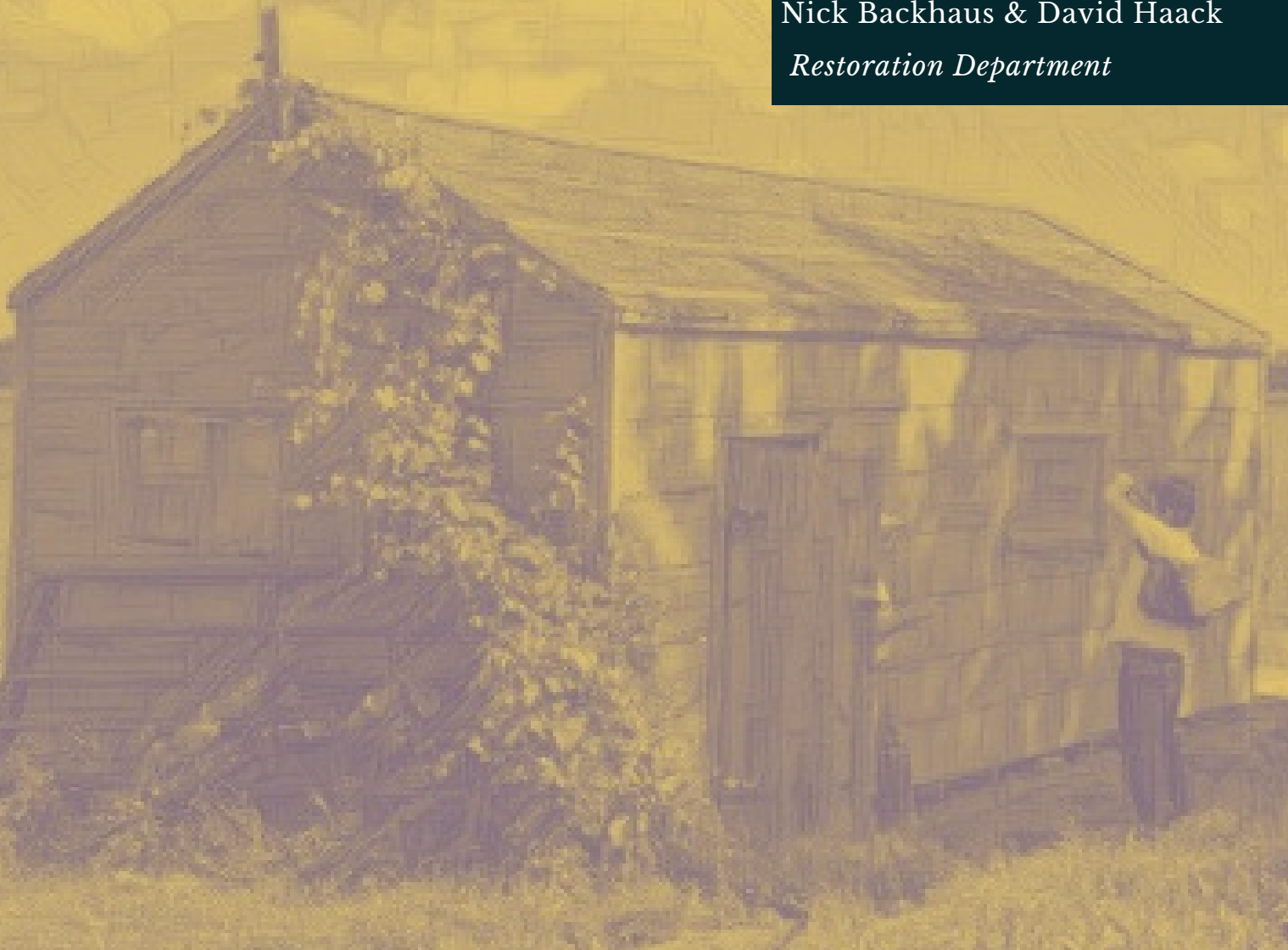


AN AGRICULTURAL ADDITION

Restoring the Bond Factory Migrant Cabin



Nick Backhaus & David Haack
Restoration Department



SEASONAL LABOR IN WISCONSIN

Going back as far as the 1900's, laborers from the American South and Southwest came north in the summers for seasonal work. Generally, these workers were American citizens in the farming industry looking for jobs during the slow southern growing season. Wisconsin has a rich but often overlooked history of migrant labor, including cherry picking in Door County and cucumber harvesting in Oconto.

Prior to World War II, migrant workers were predominantly single males. After the war, families began to migrate together, necessitating living quarters. By the late 1970's, the emergence of mechanized harvesting equipment reduced the need for these workers and therefore the houses. However, migrant work continues to this day, with the Wisconsin Department of Workforce Development estimating around 5,000 workers annually.



A section of the Migrant Home

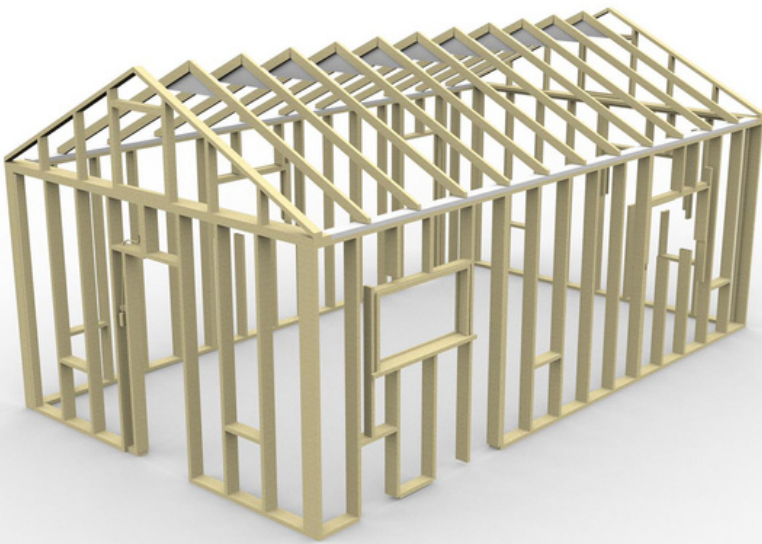
BOND VILLAGE HOUSE #8 COMES TO HERITAGE HILL

In 2017 Heritage Hill received the donation of a mid-20th century migrant's home. This home originally stood for four decades in Bond Village, which was part of Bond Pickle Factory in Oconto, Wisconsin. The village was a grouping of single-story, three season wood structures provided by Bond Pickle as seasonal housing for their agricultural migrant workers during the annual cucumber harvests between July and September.

Most homes were removed from the original site in the early 1980's and moved to rural areas of Oconto County. The home donated to Heritage Hill is house # 8 which had been placed at a farm in southern Oconto County and repurposed as a storage shed. House # 8 was disassembled and transported to Heritage Hill in eighteen separate pieces consisting of twelve wall sections, four roof sections, and two floor sections.

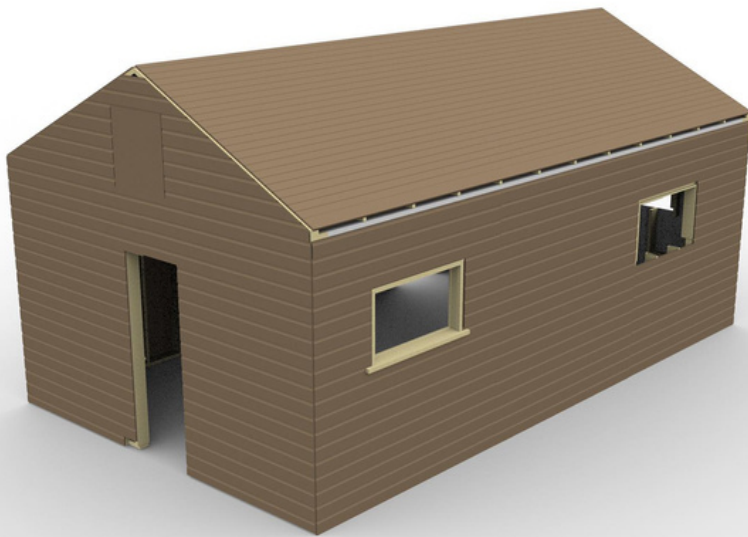


A Migrant Home wall panel



Left: 3-D renderings of what the Migrant Home will look like when complete.

Below: Long time volunteers Lyle LaLuzerne and Marty Hockers and working countless hours on restoring the Migrant Home



RESTORATION

Heritage Hill Restoration Staff began the investigation and documentation of the structure in August of 2021. Observations during this process show that the house was manufactured in ten separate wall sections and two gable (roof support) panels.

The wall sections were likely constructed off site and then transported to the Bond Village. Each panel has a designated number written on the top rafter plate in pencil along with what is believed to be an order number from the manufacturer.

The onsite construction process at Bond Village, and the process Heritage Hill will be following, would have required the floor joists and floorboards to be constructed first. Then, the preconstructed wall and gable panels would be placed and fastened over the flooring system.

The roof, comprised of rafters and roof boards, would then be constructed onsite. Remnants of what is believed to be the original roofing material was found intact along with nail patterns suggesting the roof was 36" wide-rolled heavy asphalt felt, better known as tar paper.

As of May 2022, Heritage Hill volunteers have restored seven of the ten wall panels. Progress continues with the restoration and details of the timing for placement will be determined in the next few months.



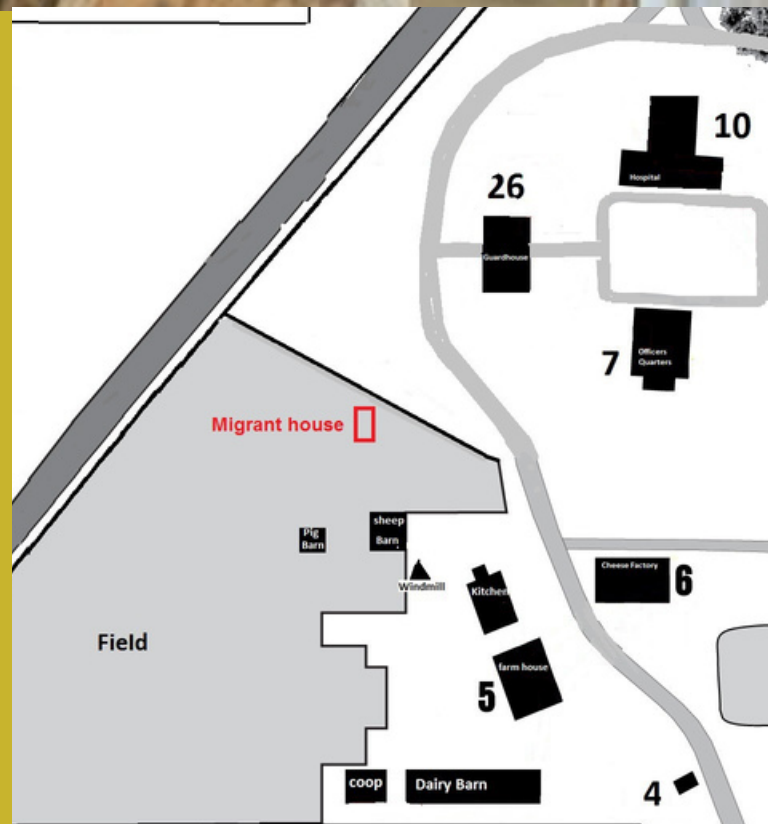
Marty Hockers, volunteer, and Nick Backhaus, Director of Operations and Restoration, inspect the panels from the Migrant Home

LOCATION AND PROGRAMING AT HERITAGE HILL

The fully restored Migrant Home exhibit will be placed within the Ethnic-Agriculture Area at Heritage Hill. The home will show the history of migrants in Wisconsin in the mid-20th century. The small fourteen-foot by twenty-four-foot Migrant Home exhibit will broaden and enhance the programming at Heritage Hill.

Furnishings within the exhibit will be aligned with the oral history of Hispanic- American migrant families that seasonally travelled to Oconto to work in the surrounding cucumber fields. This home is one of the last remaining Bond Village homes.

Heritage Hill is proud to tell the story of migrant workers and their contributions to Northeast Wisconsin agriculture.



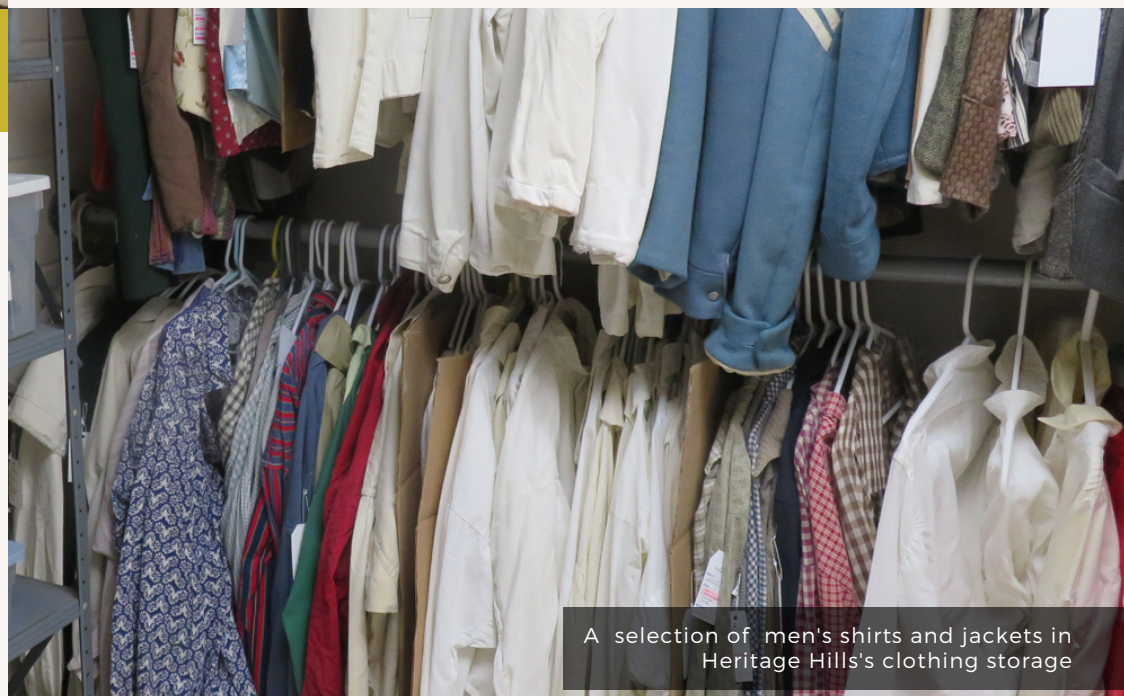


Claire E. Gwaltney
*Director of Engagement
and Visitor Services*

CORSETS, TROUSERS, AND MOCCASINS, OH MY!

Recently Heritage Hill staff and volunteers have been going through our interpreter clothing. These two collections, one for men and one for women, are overflowing with every garment imaginable that was worn during the various time periods Heritage Hill interprets, and since we interpret four distinct times, we have a lot of clothes!

It is wonderful to see the care with which many of these garments were made. Historical patterns were followed, fabric special ordered and small, but significant touches such as gussets and lace were added. It is fun to bring interpreters into the closets and have them exclaim over the first short gown they wore when they started working at Heritage Hill over 20 years ago or share that they have a photo of their husband wearing that same soldier coat from many seasons ago.



A selection of men's shirts and jackets in Heritage Hills's clothing storage

It is a privilege to work for an organization that has created such beautiful memories and I always smile when I hear them, but it also saddens me. Some of our historic clothing has been in use for over 10 or 20 years and has become faded and worn. Our fantastic team of volunteer seamstresses have been working miracles this spring as we prepare to open for the season, but the truth is that many of our clothes are ready for the rag bag.

As we work to up our living history game, we are striving to become ever-more accurate in how we interpret the past at Heritage Hill. This extends to our clothing. The truth is that a high-ranking officer at Fort Howard would not have gone on duty with frayed cuffs and every late nineteenth century woman would have been wearing a corset. Also, every historic interpreter at Heritage Hill deserves to wear a pair of historically appropriate, well-fitting shoes!





Left: It is amazing how worn buttons become! Each enlisted men's summer jacket features 13 small, eagle buttons, but as you can see here, over time the eagles actually wear away from heavy use. At \$5 per button, this is a surprisingly expensive repair!

Right: Our interpreters often work around fires, and it is common for hems to get singed. This one is not too damaged, but how much longer will it hold out?



Left: Twenty years ago, the women's closet had one rack of dresses. Now it and the men's closet are stuffed with historic clothing and accessories!

Below: Most of our garments have seen much wear and one of the ways it shows is in how faded some are. For example, this 1830's dress features purple stripes that now appear in a variety of shades. In truth, an officer or his wife would not have let their garments deteriorate to this extent.

Our staff is currently working to assess and prioritize our overall clothing needs. As we determine what needs to be repaired and replaced, we hope you will consider helping! If you are an experienced seamstress or tailor – or have the desire to learn – we would love to open our sewing room to you and benefit from your talents! Or consider donating to help us purchase what we cannot make, such as shoes, historic buttons, and headgear.



It truly takes a village to clothe the interpreters at Heritage Hill. Thank you to everyone who has been helping us prepare our clothing for this season and be sure to visit soon to see our interpreters in all their wide array of apparel.

SPRING IS HERE!



Amanda Grisette
*Director of Sales
and Private Events*



As another gorgeous Wisconsin spring arrives on the heels of a long winter, we turn our attention once again to the wedding season at Heritage Hill. Since I started in November 2021, it has been near nonstop activity in the Sales Department. This year we are already at near nuptial capacity for 2022! After redeveloping our wedding packages to make Heritage Hill more competitive, we turned our attention to crafting some new special event offerings.

One of the new programs I am most excited about is our Birthday Part package. Heritage Hill is the perfect location for your little one's party! Our venue set within a natural environment and among historically interpreted buildings is unlike any other in Northeast Wisconsin. We even have a STEM-based playground for kids of all ages!

It is never too early to start planning for your special occasion at our location. Heritage Hill is the perfect place to host Bridal and Baby Showers, Anniversaries, Birthday Parties, Meetings, Christmas Parties, Vow Renewals and so much more. We are open year-round and welcome all types of events. Our unique venue is capable of accommodating all of your needs. Best of all, if you purchase a yearly membership, rental facility discounts are available.

Welcome back! I hope to see you soon.

Contact me at (920) 448- 5150 ext.105 or amanda@heritagehillgb.org for additional information.



THE VOYAGEUR SCULPTURE

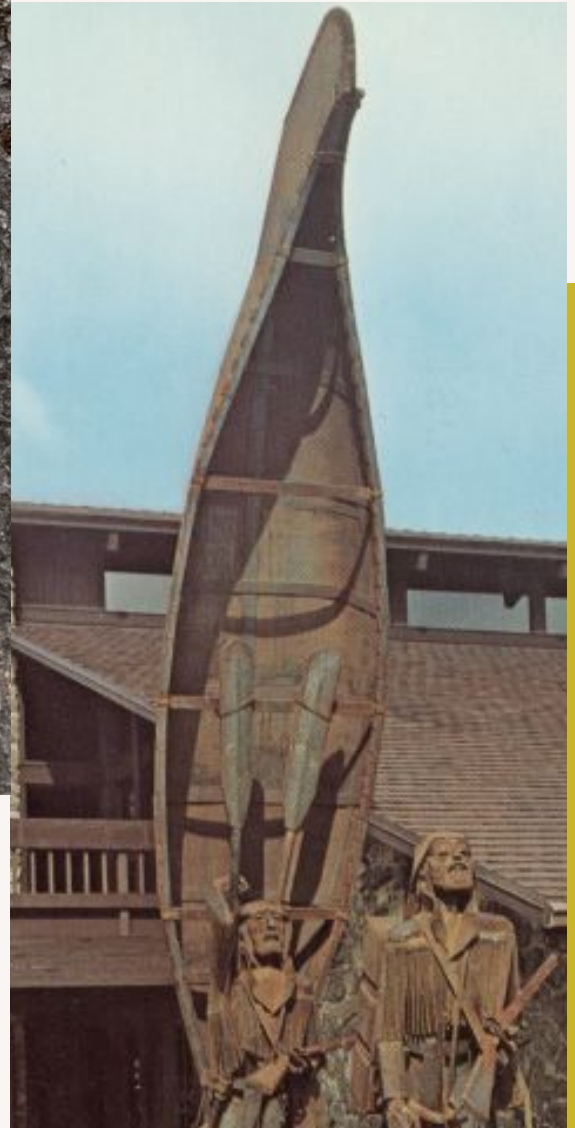
By now you have likely noticed our new logo. Based upon the iconic Lyndon Fayne Pomeroy sculpture of two voyageurs engaged in portaging a canoe, the new logo reminds us of Green Bay's historical link to the French fur trade that helped shape this region's development.

Like the intrepid voyageurs, Heritage Hill continues on its own historical journey. After 45-years of sharing the history of this region, we find ourselves on the cusp of a new era. The new logo is more than just a marketing tool. It represents our "north star" – the blazing of new trails and finding new discoveries. We invite you to join us on our that journey of change and progress.



Above: Members of the Building and Grounds committee receive a progress update on the restoration of the Voyageur Sculpture. Restoration is being completed by Dave Bertram, a volunteer professional welder and metal worker.

Right: The sculpture as it stood on the corner of Pine and Monroe streets for many years





Heritage Hill State Historical Park
2640 S Webster Ave
Green Bay, WI 54301



HERITAGE·HILL

STATE HISTORICAL PARK

2640 S. Webster Ave. Green Bay, WI 54301
(920) 448-5150 | info@heritagehillgb.org

STAY CONNECTED

Visit us on social media: @heritagehillgb on any of the platforms below. Sign up for our e-blasts by visiting www.heritagehillgb.org



COMMENTS & SUBMISSIONS

We welcome your comments and editorial submissions concerning *The Hilltop Gazette*. Please send any to Elizabeth Jolly, Senior Marketing Specialist at liz@heritagehillgb.org

THANK YOU TO OUR MEMBERS!

AMBASADOR - \$1000

John Straub

EXPLORER- \$250

Debbie Ashmann
Ann Beilke
Mari McAllister-Charles

FAMILY- \$65

Katrina Adrians
Heather Baker
Joel Barthel
Kelly Drzewiecki
Courtney Elkington
Pam Griffin
Dan Katers
Dan Rogers
Sarah Rusch
Rochelle Van Erem
Jennifer Watson

INDIVIDUAL - \$50

Judith Bragelman
William Brewster
Angie Bruner
Madeleine Buchholz
Stacie Gorecki
Rose Heimmermann
Jacqueline Javor
Amara Kectesz-Roatch
Kim Klister
Richard Mamrosh
Todd Marsh
Allison Nault
Dave Racine
Linda Racine
Bill Reiser
Michael Telzrow